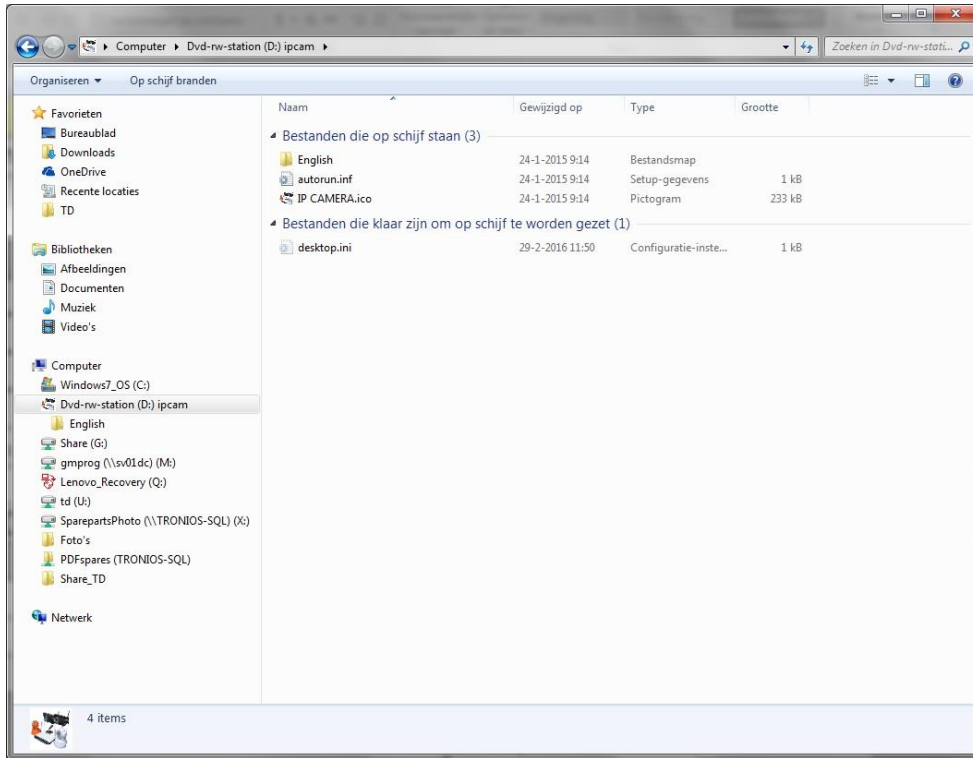
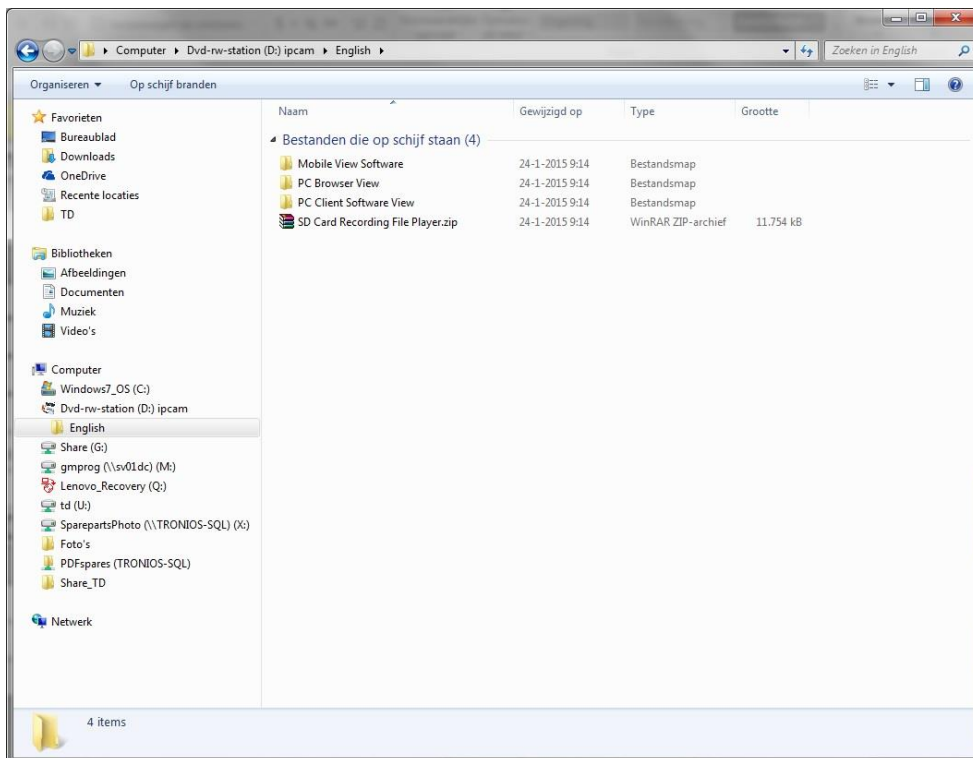


351.146 Software install.

Start program.

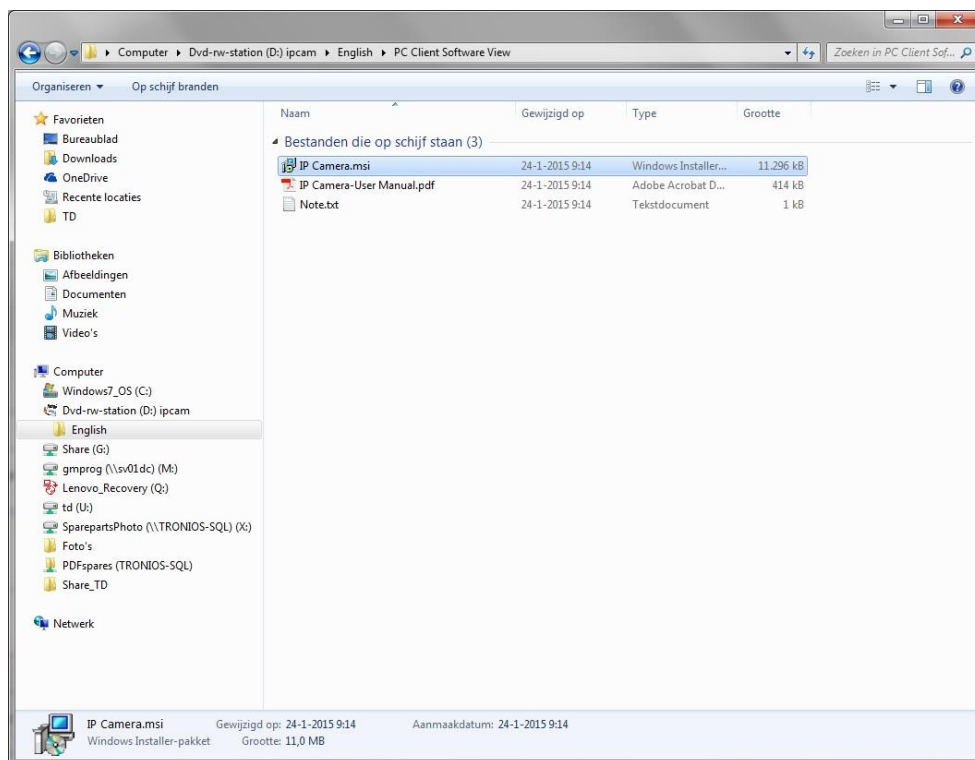


Select English



Select PC client Software view

Start program : IP Camera.msi



Regrettably the next steps are in Chinese, please follow the red arrows

Do you want to install the software select next.



Select the path where the program has to be installed.

Press Next.



Wait For the program to complete installation:

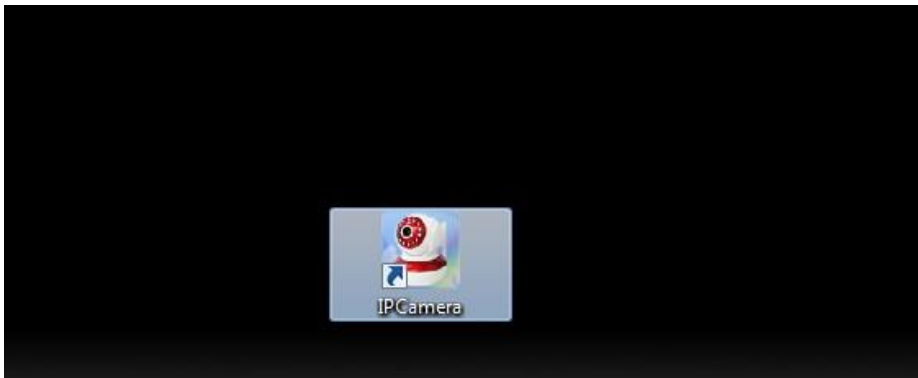
Setup completed, press Next to continue



Installation is completed press exit.



You should see this shortcut on your desktop, start the program.



The program will start in English.

